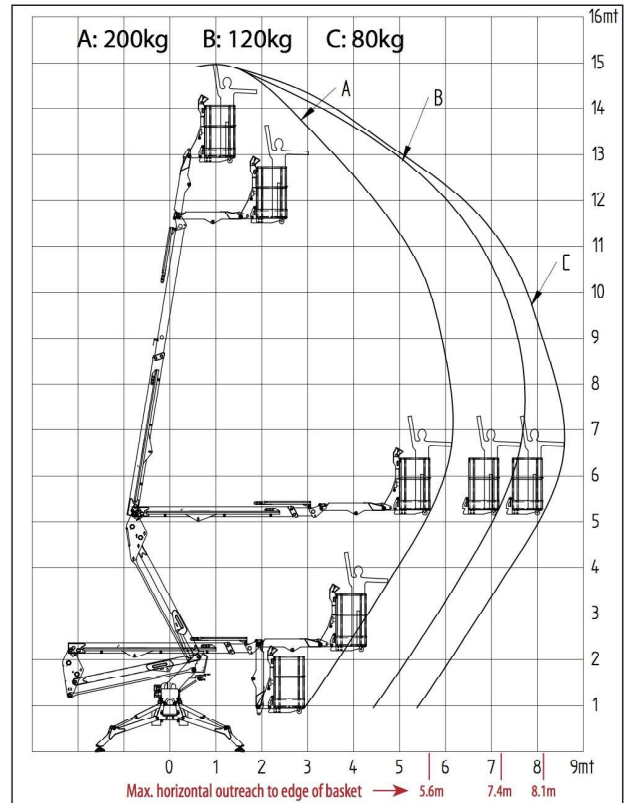


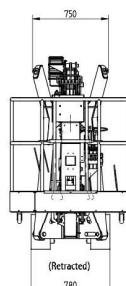
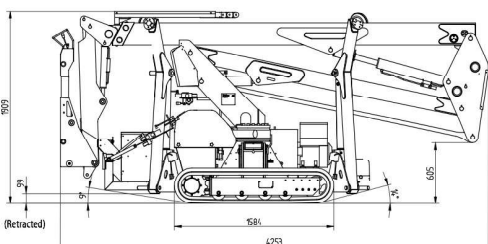
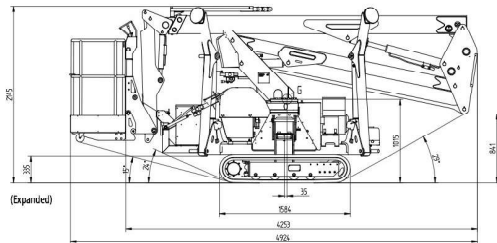
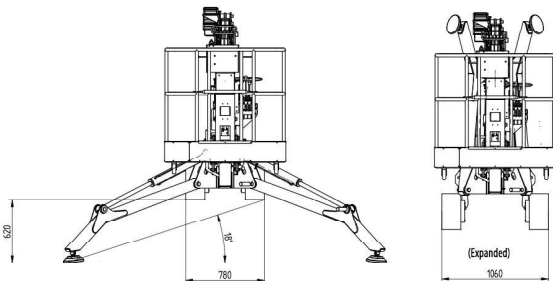
Max Working Height (m)	15.00
Max Platform Height (m)	13.00
Max Horizontal Working Outreach (m)	8.50
Max Horizontal Outreach to edge of basket (m)	8.10
Lift Capacity / SWL (kg)	200
Weight / Outreach Limited (Yes/No)	Yes
Turret Rotation	359°
Basket Rotation	Option
Length with basket (m)	4.92
Length w/out basket (m)	4.25
Width stowed tracks (m)	0.78
Height (m) Stowed	1.91
Basket Dimensions	1.2 x .66
Total Weight (kg)	1950
Max ground pressure driving (approx)	38.5 kN/m <sup>2</sup>
Max stabilizer force	12.5kN
Max stabilizer pressure with std foot pad	446 kN/m <sup>2</sup>
Gradeability length-wise	24 degrees
Gradeability sideways	15 degrees (27%)
Stabilizer set-up dimensions	3.21 x 3.86 o/o
Narrow set-up dimensions	N/A
Max slope for stabilizers	18 degrees
Standard Power Source/s	Honda 13 Hp Petrol & 240 Volt electric system
Optional Power Sources	Yanmar 9 hp or Kubota 14 hp Diesel
Drive system	Tracks
Expanding tracks	Std
Drive speed km/h	
2 Speed Drive	no
Remote drive control	Radio Option
Battery voltage	12
Basket load control	Std
Electric & Air outlets in basket	Std
Electric emergency lowering	Option

**SPECIFICATIONS**



Complies with AS1418.10

(E & OE.)



Weighing under 2 tonnes, the 1575 is ideal for use on load sensitive floors, including jetties!

